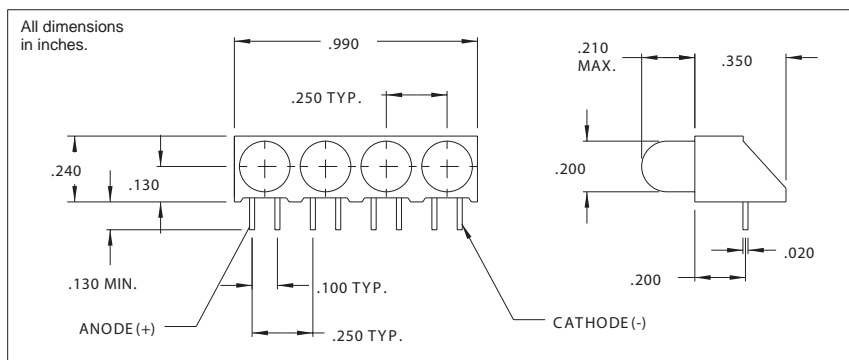


5640 Series T-1 3/4 Right Angle 4 Wide LED Assembly

DESCRIPTION AND FEATURES



- Features:
- Quad assembly with 4 LEDs permits easy installation-assures matched height and center to center spacing, reduces assembly time and costs.
 - Super Brite LEDs
 - High contrast ratio.
 - Low current - only 2mA
 - Built-in resistor chips - operates off 5 volt or 12 volt supply without external resistor.
 - Standoffs prevent flux entrapment.
 - Housing: Black Nylon, UL94V-O
 - Mounting hole pattern on page 1-X6.

The user who may have a requirement calling for various color/electrical specifications, a part number can be determined by referring to the chart shown below.

	Red	Amber	Green	Yellow
LED	1	3	5	7

Model No. is as follows: 5640H Pos. 1 ; Pos. 2 ; Pos. 3 ; Pos. 4

When specifying all 4 LEDs of the same type -
 Example: 4 each 5 volt red LEDs, the part number is 5640H1-5V

When specifying a variety of colors -
 Example: Position 1 is green, position 2 is red, position 3 is yellow, position 4 is amber. All standard voltage.
 The part number is 5640H5;1;7;3.

Alternate LEDs are also available in this package as a standard variation.

ELECTRO-OPTICAL CHARACTERISTICS AND RATINGS

Part Number	Emitted Color	Typical Intensity (mcd)	Rated Current (mA)	Continuous Forward Current Max. (mA)	Forward Voltage		Reverse Breakdown Voltage Min.(V)	Peak Wavelength (nm)
					Typ. (V)	Max. (V)		
1	Red	6.3	10	35.0	2.0	3.0	5.0	650
3	Amber	10.0	10	35.0	2.0	3.0	5.0	608
5	Green	10.0	10	30.0	2.2	3.0	5.0	563
7	Yellow	6.3	10	35.0	2.1	3.0	5.0	585
1LC	Red	2.3	2.0	7.0	1.8	2.7	5.0	635
5LC	Green	2.3	2.0	7.0	1.8	2.2	5.0	565
7LC	Yellow	2.1	2.0	7.0	1.9	2.7	5.0	583
1-5V	Red	8	10	15.0	5.0	7.5	5.0	635
3-5V	Amber	8	10	15.0	5.0	7.5	5.0	583
5-5V	Green	8	12	15.0	5.0	7.5	5.0	565
1-12V	Red	8	12	20	12	15.0	-	635